

**CERTIFIED LAND CORNER RECORDATION**

DESCRIPTION OF CORNER EVIDENCE FOUND, AND ORIGINAL RECORD (if known)

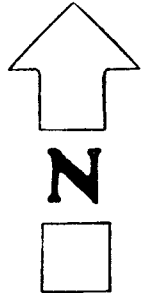
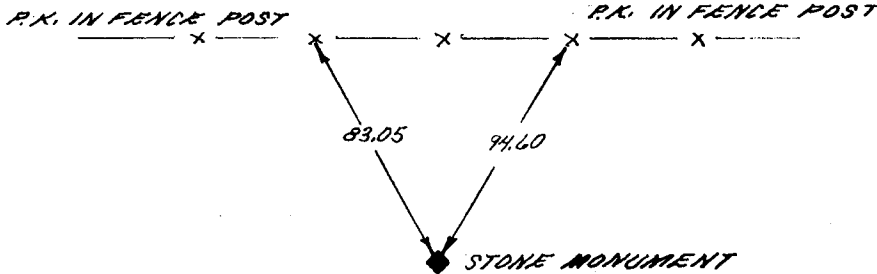
T. 14 N.  
 28  
 --- 1/4  
 33  
 R. 64 W.

FOUND: RED SANDSTONE 4"x12" PROJ. 6" ABOVE GROUND PLAINLY MARKED "14" ON NORTH FACE.

DESCRIPTION OF MONUMENT AND ACCESSORIES ESTABLISHED TO PERPETUATE THE ORIGINAL LOCATION OF THIS CORNER:

SEE TIES BELOW

SKETCH, WITH COURSE AND DISTANCE TO ADJACENT CORNER IF DETERMINED IN THIS SURVEY.  
 (May Sketch or Paste Reproduction on Reverse Side.)



I, JOHN A. STEIL certify that I have carefully performed or reviewed the work done on the diagrammed corner as reported on this recordation form and approve the same.

*John A. Steil*  
 Signature of Surveyor

L.S. 2500  
 Registration No.

STATE OF WYOMING,  
 Office of Clerk and Recorder,  
 County of Taramie

740794

This "corner record" was filed for record on the \_\_\_\_\_ day of APR 12 1984, 19\_\_\_\_, was noted on the cross-index plat and is assigned page No. \_\_\_\_\_, in book No. \_\_\_\_\_.

County Official

Cross Index No. <u>V-11</u>	T. <u>14 N.</u>	R. <u>64 W.</u>	Mer. <u>6th</u>
_____	T. _____	R. _____	Mer. _____
_____	T. _____	R. _____	Mer. _____
_____	T. _____	R. _____	Mer. _____
_____	T. _____	R. _____	Mer. _____
_____	T. _____	R. _____	Mer. _____
_____	T. _____	R. _____	Mer. _____

V-11 14-64